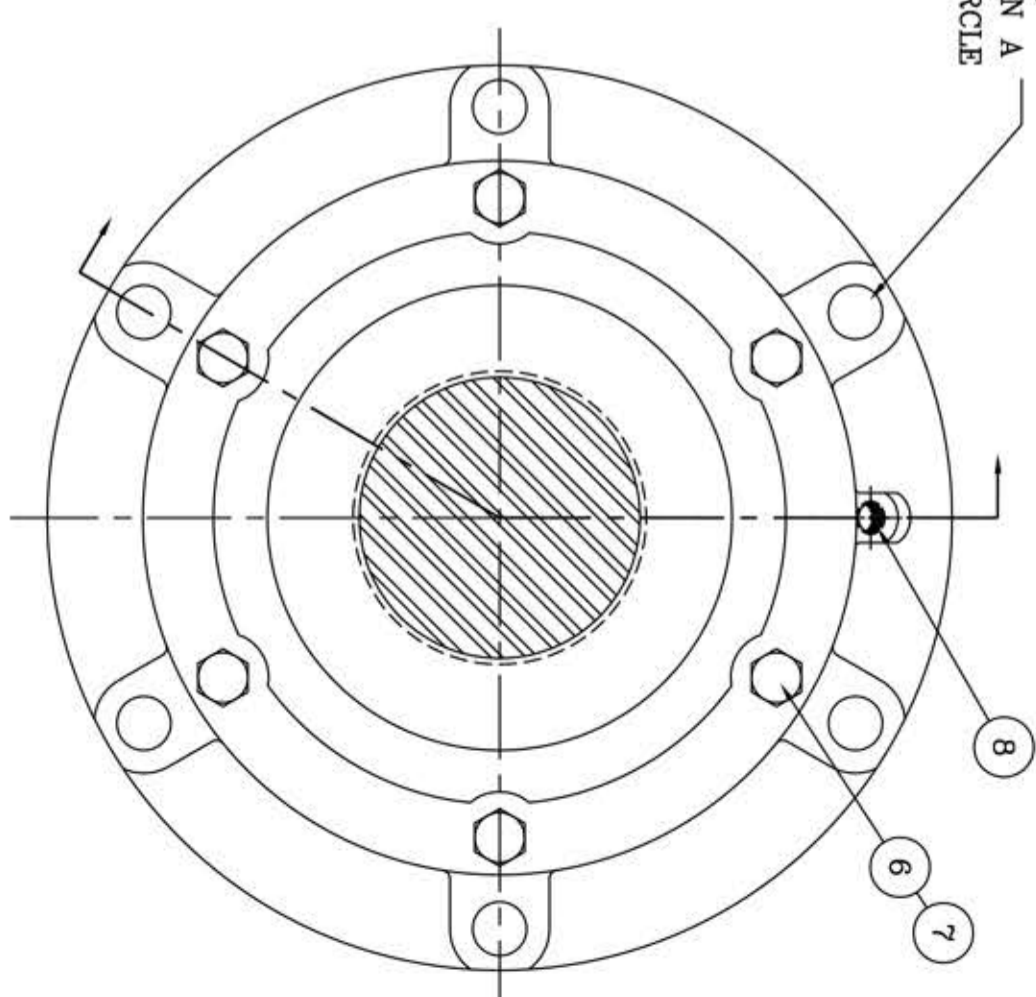
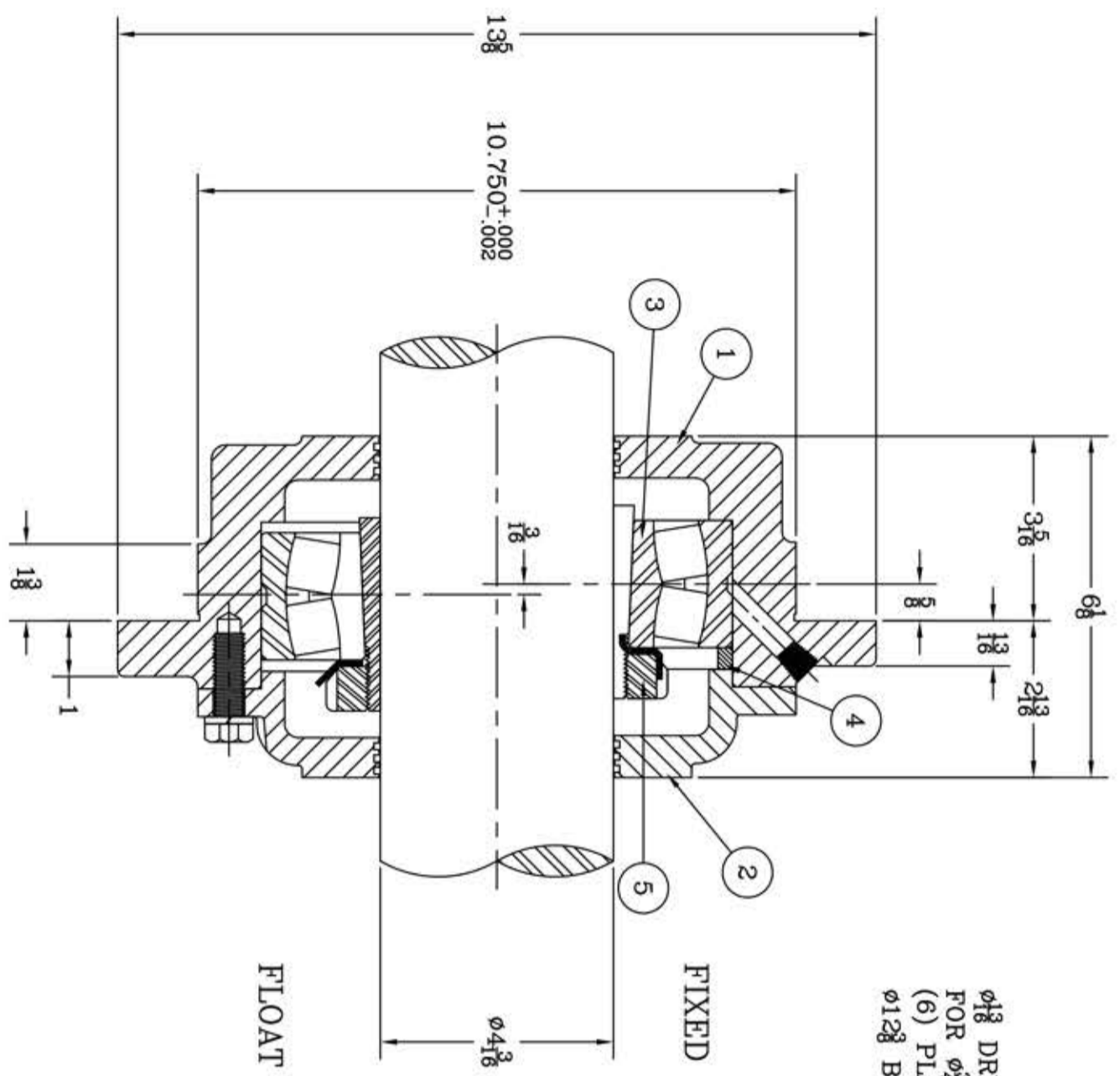


This drawing is the sole property of Miether Bearing Products and contains confidential and proprietary information. It is being provided to you for your use and may not be disclosed to any third party or used for any other purpose without Miether's prior written consent. The [materials] must be returned to the Company upon its demand. Your acceptance of these materials constitutes your acceptance of the foregoing terms.

C-12017



ITEM	DESCRIPTION	DETAIL	REQUIRED
1	HOUSING HL-524	C-12165	1 1
2	ENDCAP KL-524	C-12166	1 1
3	SPHERICAL ROLLER BEARING	22224-K/W-33	1 1
4	STABILIZING RING 24-20	A-10604	1 0
5	ADAPTER SNW-24 04-03	24426	1 1
6	CAP BOLT HEX. HEAD	$\frac{1}{2}$ -13 x $1\frac{1}{4}$	6 6
7	LOCKWASHER	$\frac{1}{2}$ SPLIT	6 6
8	PIPE PLUG	$\frac{1}{4}$ -18 NPT.	1 1

REDRAWN FOR CONFORMITY AR per KAB 12-29-03
 REDRAWN ON COMPUTER TO SCALE FHB per KAB 11-19-98

REVISIONS

SYMBOL	DESCRIPTION	DATE
✓	16	32
✓	63	125
✓	250	500
✓	1000	

TOLERANCE: UNLESS OTHERWISE SPECIFIED
 FRACTIONS $\pm 1/32$ ANGLES $\pm 0^{\circ} 30'$
 DECIMALS $\pm .005$ WELD $\pm 1/16$
 CASTING $\pm 1/16$

A.I.S.I. STANDARD FINISHES

AN ALCO INDUSTRIES COMPANY
 BEARING PRODUCTS
 ODESSA, TX. USA

FCL 22524	04-03
ASSEMBLY DRAWING	
SCALE HALF	ASSEMBLY NO.
DRAWN REB	
DATE 4/2/68	DRAWING NO.
CHK:	C-12017