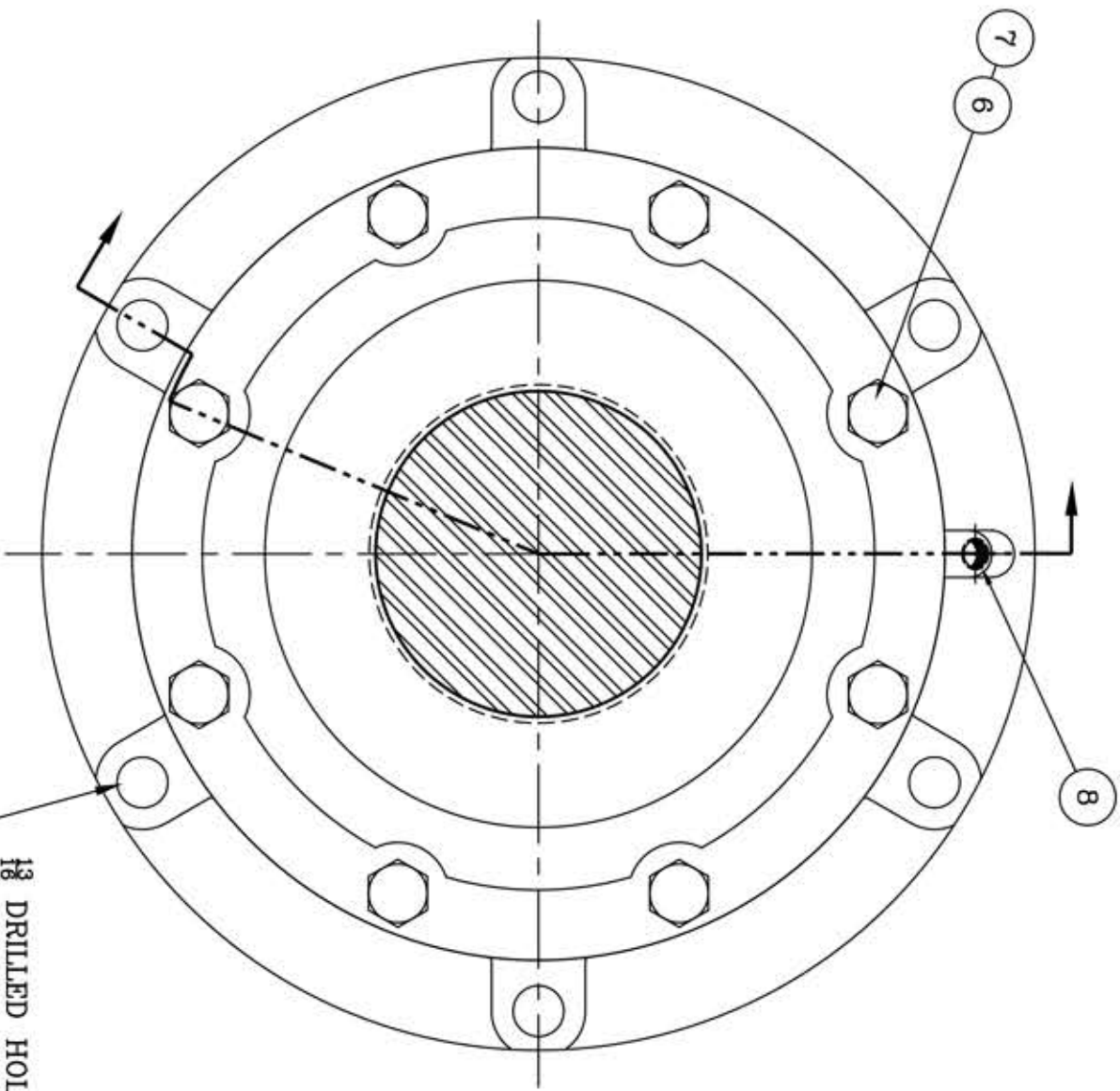
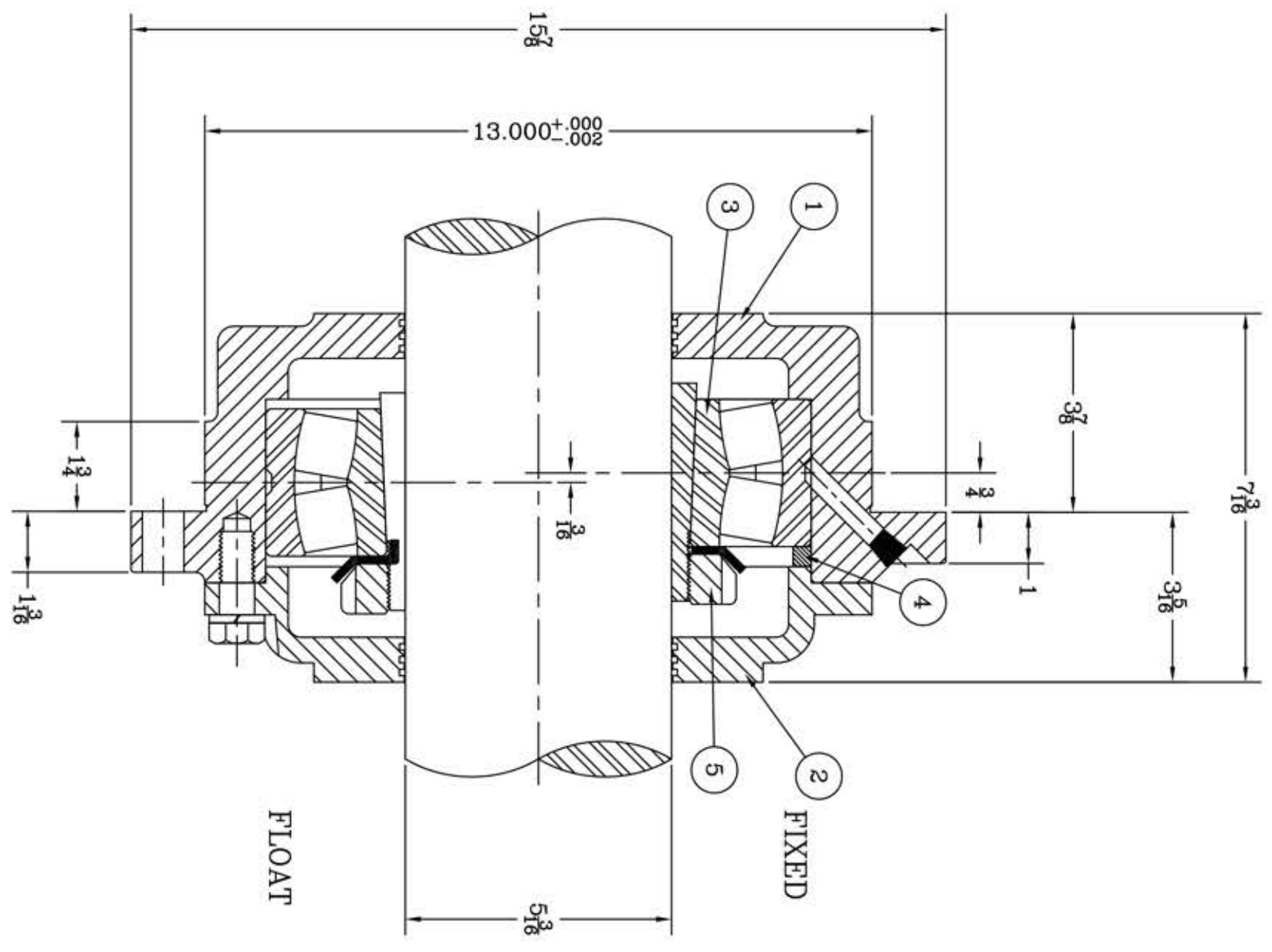


This drawing is the sole property of Miether Bearing Products and contains confidential and proprietary information. It is being provided to you for your use and may not be disclosed to any third party or used for any other purpose without Miether's prior written consent. The [materials] must be returned to the Company upon its demand. Your acceptance of these materials constitutes your acceptance of the foregoing terms.

C-12020



1/8 DRILLED HOLES FOR (6) 3/8 BASE BOLTS ON 1 1/8 B.C.

ITEM	DESCRIPTION	DETAIL	REQUIRED
1	HOUSING HL-530	C-12171	1 1
2	ENDCAP KL-530	C-12172	1 1
3	SPHERICAL ROLLER BEARING	22230K/W 33	1 1
4	STABILIZING RING SR-30-0	A-10607	1 0
5	ADAPTER SNW-30 05-03	B-24440	1 1
6	CAP BOLT HEX. HEAD	8-11 NC x 1 1/8 LONG	8 8
7	LOCKWASHER	8 SPLIT MED.	8 8
8	PIPE PLUG	1-18 NPT	1 1

REDRAWN FOR CONFORMITY AR per KAB 12-30-03  
 REDRAWN ON COMPUTER OMI per KAB 12-30-98

REVISIONS

SYMBOL	DESCRIPTION
✓	16
∇	32
∇	63
∇	125
∇	250
∇	500
∇	1000

TOLERANCE: UNLESS OTHERWISE SPECIFIED  
 FRACTIONS +- 1/32"  
 DECIMALS +- .005"  
 CASTING +- 1/16"  
 WELD +- 1/16"  
 ANGLES +- 0° 30'

A.I.S.I. STANDARD FINISHES

AN ALCO INDUSTRIES COMPANY  
 BEARING PRODUCTS  
 ODESSA, TX. USA

FCL 22530 05-03	ASSEMBLY DRAWING
SCALE HALF	ASSEMBLY NO.
DRAWN REB	DRAWING NO.
DATE 4/20/68	C-12020
CHK:	