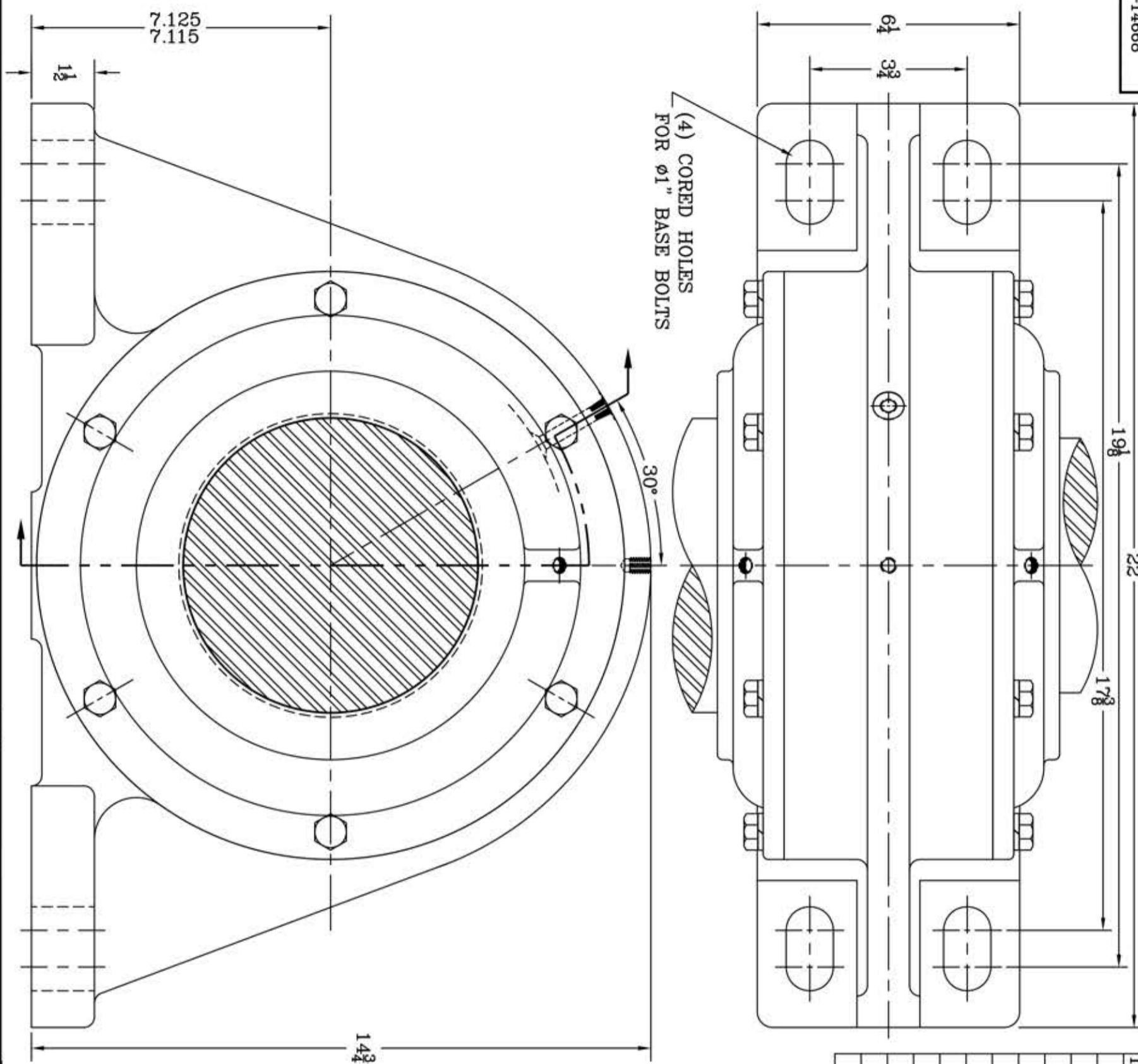
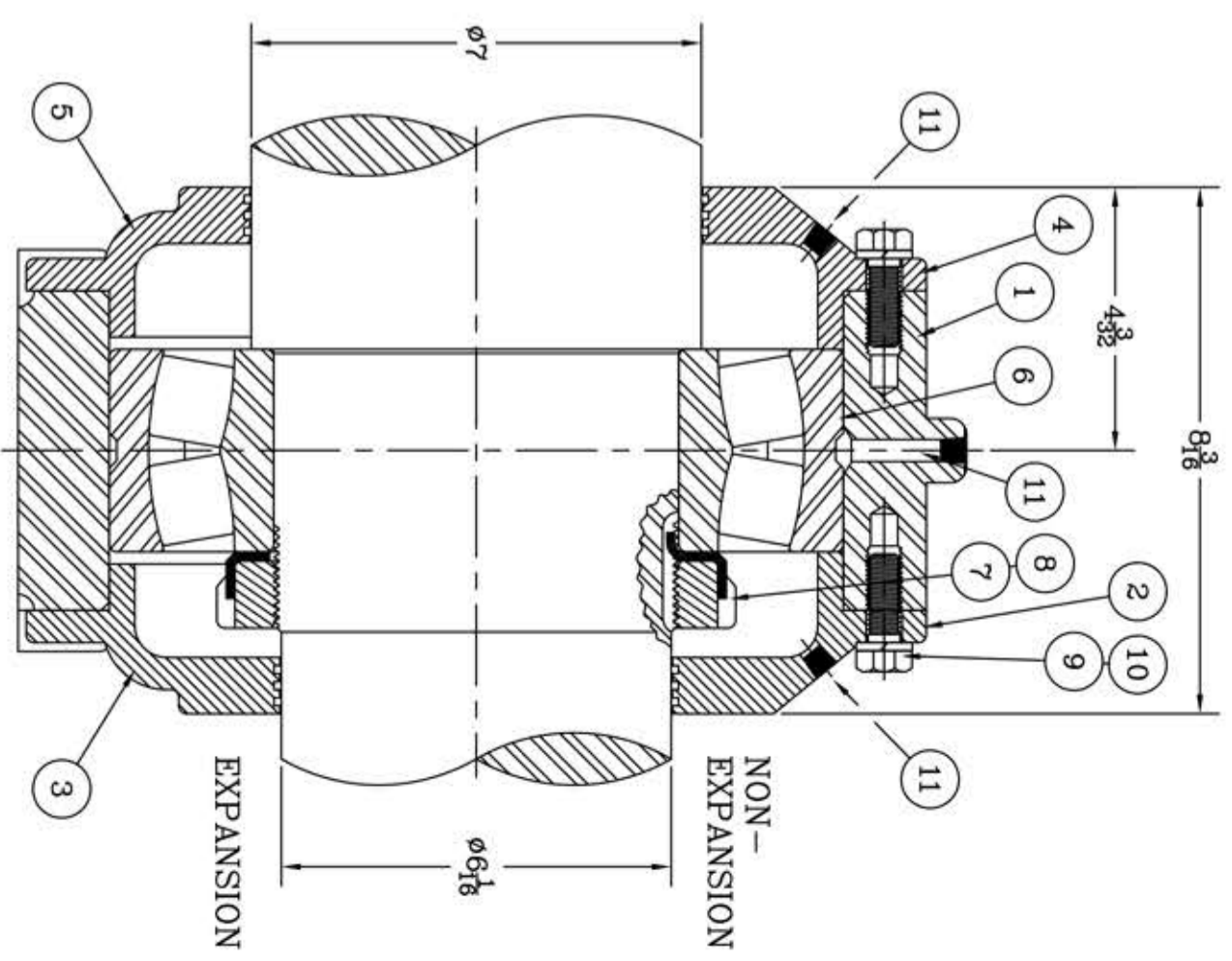


This drawing is the sole property of Miether Bearing Products and contains confidential and proprietary information. It is being provided to you for your use and may not be disclosed to any third party or used for any other purpose without Miether's prior written consent. The [materials] must be returned to the Company upon its demand. Your acceptance of these materials constitutes your acceptance of the foregoing terms.

C-14668



ITEM	DESCRIPTION	DETAIL	REQUIRED N	EXP	EXP.
1	HOUSING M3005	C-03005	1	1	1
2	ENDCAP F3122 NEL	C-22400	1	0	0
3	ENDCAP F3123 EL	C-22400	0	1	1
4	ENDCAP F3124 NEL	C-22404	1	0	0
5	ENDCAP F3125 EL	C-22404	0	1	1
6	SPHERICAL ROLLER BEARING	22232/W-33	1	1	1
7	LOCKNUT AN-32	B-10420	1	1	1
8	LOCKWASHER W-32	00250	1	1	1
9	CAP BOLT HEX. HEAD	1/2-13 NC x 1 1/2 LONG	12	12	12
10	LOCKWASHER	1/2 SPLIT MED.	12	12	12
11	PIPE PLUG	1/2-27 NPPT	3	3	3



REDRAWN ON COMPUTER per JLL by RWB 7-30-02

REVISIONS

SYMBOL	DESCRIPTION
C	16
D	32
E	63
F	125
G	250
J	500
K	1000

TOLERANCE: UNLESS OTHERWISE SPECIFIED

FRACTIONS $\pm 1/32$ " ANGLES $\pm 0^\circ 30'$
 DECIMALS $\pm .005$ " WELD $\pm 1/16$ "
 CASTING $\pm 1/16$ "

AN ALCO INDUSTRIES COMPANY
 BEARING PRODUCTS
 ODESSA, TX. USA

MMW 22232 07-00 x 06-01
 ASSEMBLY DRAWING
 SCALE HALF
 DRAWN CJ
 DATE 12-13-71
 CHK: C-14668