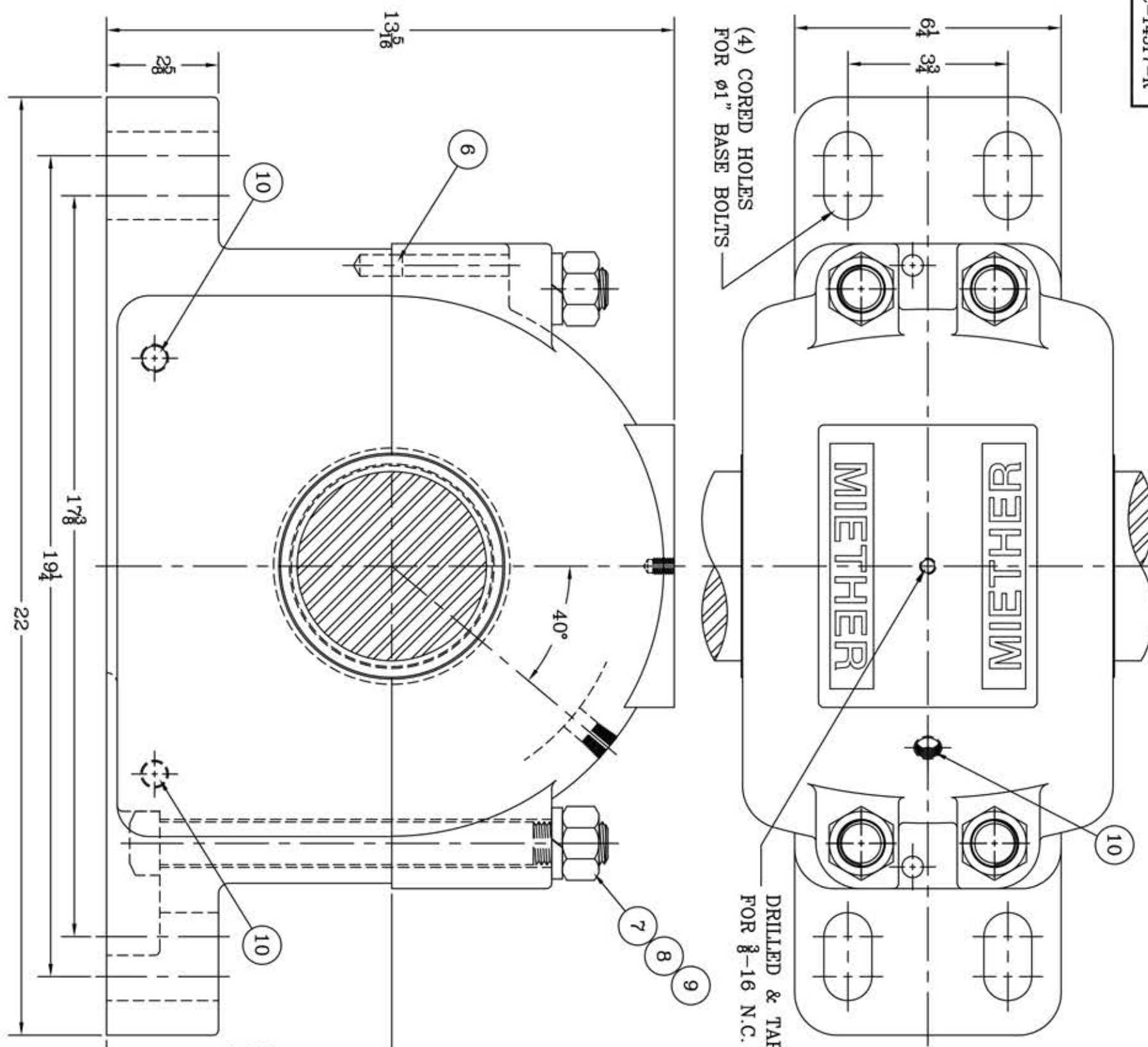


This drawing is the sole property of Miether Bearing Products and contains confidential and proprietary information. It is being provided to you for your use and may not be disclosed to any third party or used for any other purpose without Miether's prior written consent. The [materials] must be returned to the Company upon its demand. Your acceptance of these materials constitutes your acceptance of the foregoing terms.

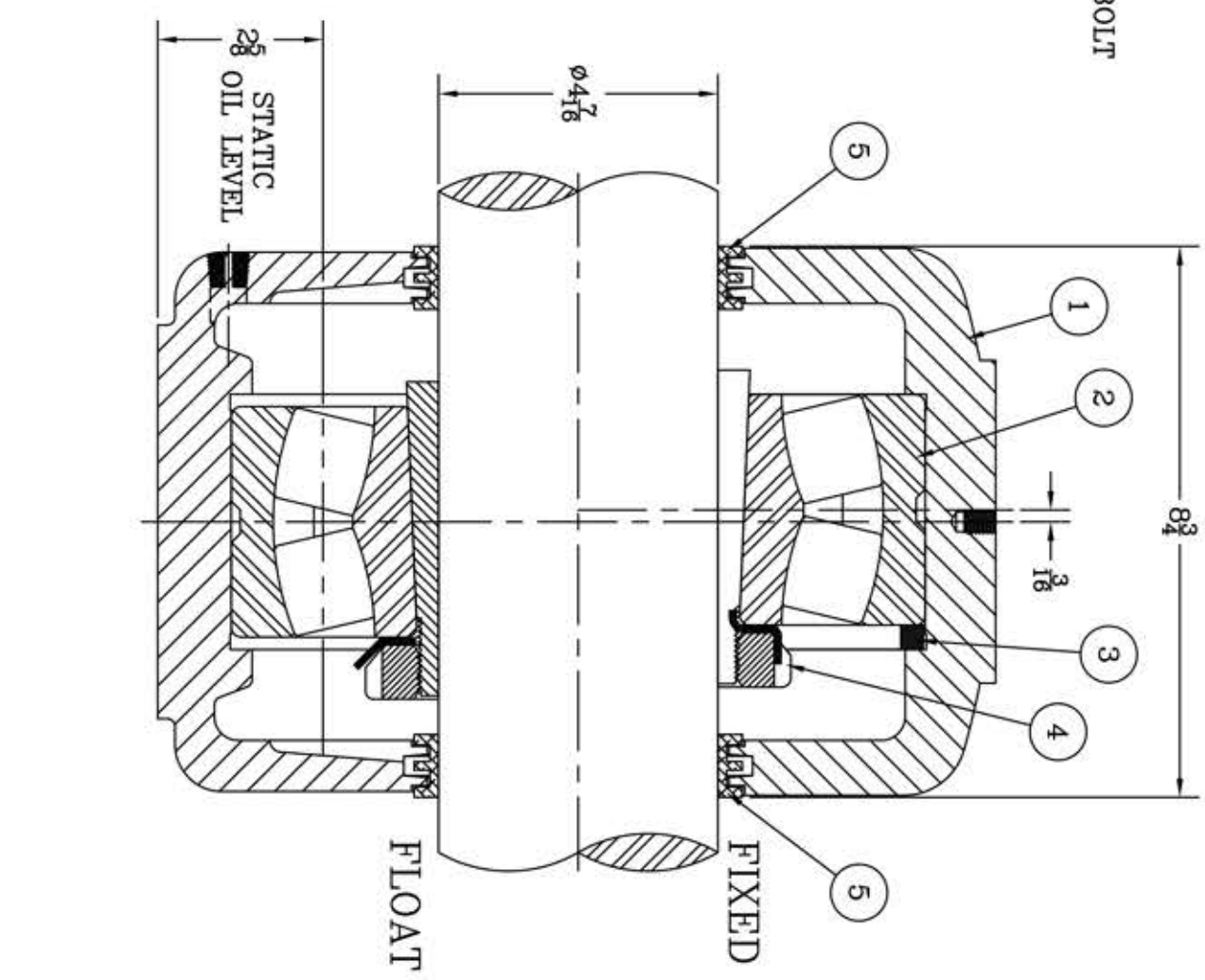
C-14517-R



(4) CORED HOLES FOR  $\phi 1$ " BASE BOLTS

DRILLED & TAPPED FOR 3-16 N.C. EYEBOLT

ITEM	DESCRIPTION	DETAIL	REQUIRED P.D.	REQUIRED P.L.T.
1	HOUSING SAF 626 04-07	C-13187-R	1	1
2	SPHERICAL ROLLER BEARING	22326K/W-33	1	1
3	STABILIZING RING SR-0-26	A-10863	1	0
4	ADAPTER SNW-26 04-07	24391	1	1
5	TRIPLE SEAL RING LER-117	A-10497	2	2
6	DOWEL	$\phi 2 \times 1$ " LONG	2	2
7	CAP BOLT SQUARE HEAD	1-8 NC x 10 1/2 LONG	4	4
8	CAP BOLT HEX. NUT	1-8 NC	4	4
9	LOCKWASHER	1" SPLIT MED.	4	4
10	PIPE PLUG	3-18 NPT	3	3



REDRAWN FOR CONFORMITY  
RWB per KAB  
5-6-04

REDRAWN ON COMPUTER  
by [signature]  
3/26/01

REVISIONS

SYMBOL	DESCRIPTION
C	16
D	32
E	63
F	125
G	250
J	500
K	1000

TOLERANCE: UNLESS OTHERWISE SPECIFIED

FRACTIONS  $\pm 1/32$ " ANGLES  $\pm 0^\circ 30'$

DECIMALS  $\pm .005$  WELD  $\pm 1/16$ "

CASTING  $\pm 1/16$ "

A.I.S.I. STANDARD FINISHES

MIETHER BEARING PRODUCTS, INC.  
AN ALCO INDUSTRIES COMPANY  
ODESSA, TX. USA

SAF 22626 04-07	ASSEMBLY DRAWING
SCALE HALF	ASSEMBLY NO.
DRAWN CJ	DRAWING NO.
DATE 4/24/74	CHK: C-14517-R