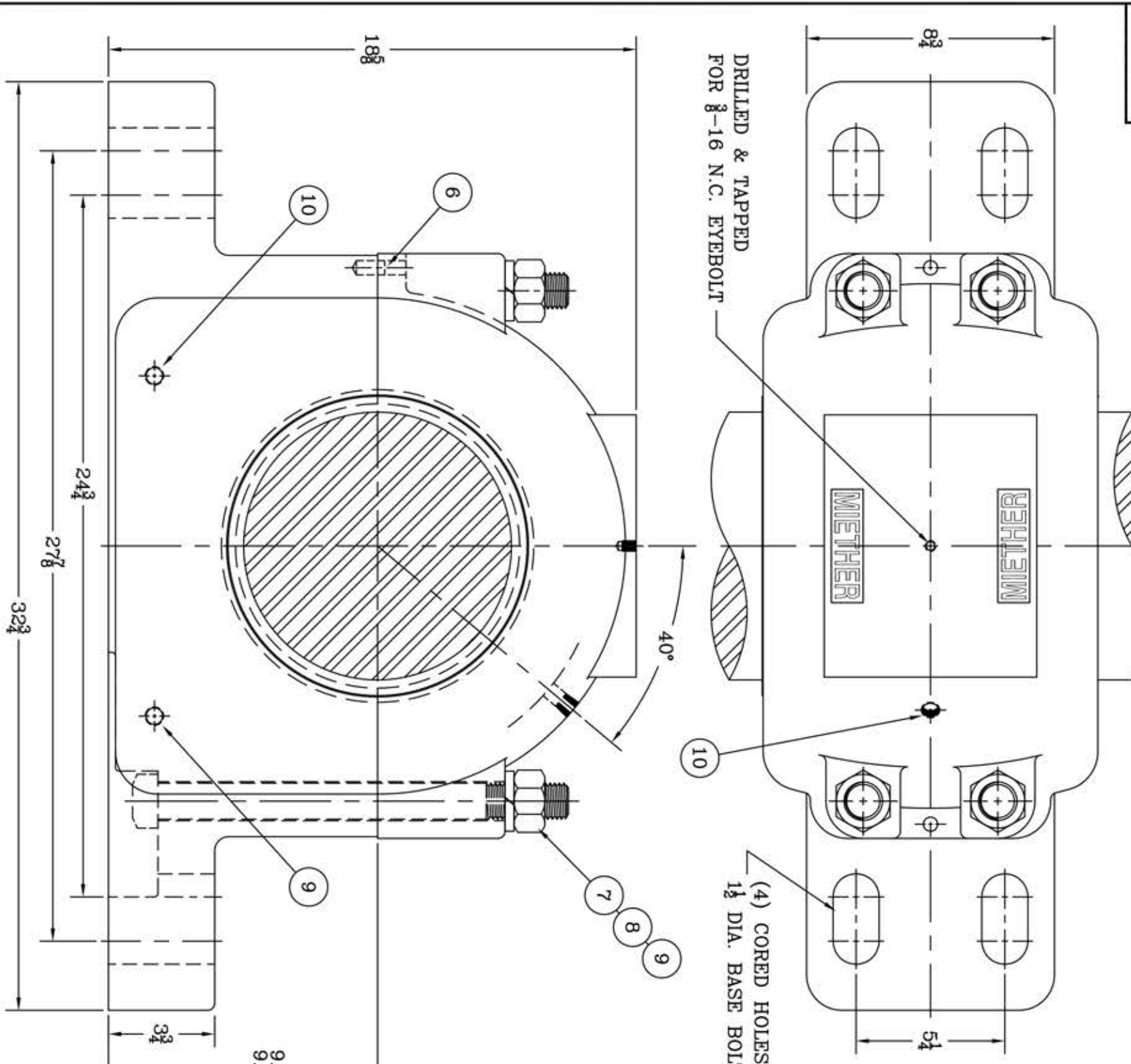
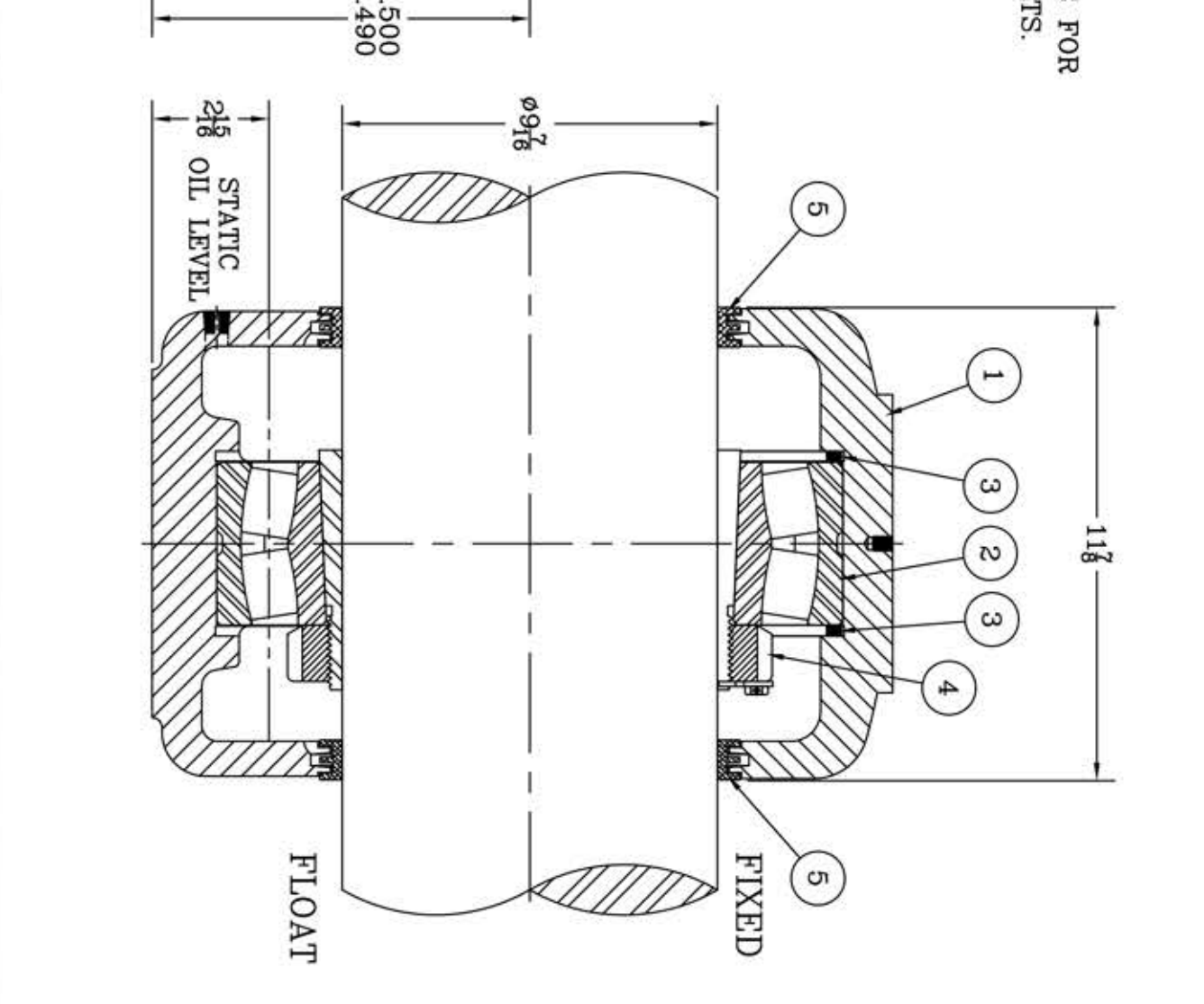


This drawing is the sole property of Miether Bearing Products and contains confidential and proprietary information. It is being provided to you for your use and may not be disclosed to any third party or used for any other purpose without Miether's prior written consent. The [materials] must be returned to the Company upon its demand. Your acceptance of these materials constitutes your acceptance of the foregoing terms.

C-35249



ITEM	DESCRIPTION	DETAIL	REQUIRED
1	HOUSING SAFD-052 K 09-07	C-	1 1
2	SPHERICAL ROLLER BEARING	23052K/W-33	1 1
3	STABILIZING RING SR-8898	A-15856	2 0
4	ADAPTER SNP-3052 09-07	24267	1 1
5	TRIPLE SEAL RING LER 178-1	A-11844	2 2
6	DOWEL	$\phi 1/2$ x 1" LONG	2 2
7	CAP BOLT SQUARE HEAD GR.5	1 1/4-7 NC x 1 1/4" LONG	4 4
8	CAP BOLT HEX. NUT	1 1/4-7 NC	4 4
9	LOCKWASHER	1 1/4 SPLIT MED.	4 4
10	PIPE PLUG	3/8- NPT	3 3



REVISIONS	
SYMBOL	VALUE
C	16
D	32
E	63
F	125
G	250
J	500
K	1000

TOLERANCE: UNLESS OTHERWISE SPECIFIED  
 FRACTIONS  $\pm 1/32"$  ANGLES  $\pm 0^\circ 30'$   
 DECIMALS  $\pm .005"$  WELD  $\pm 1/16"$   
 CASTING  $\pm 1/16"$

A.I.S.I. STANDARD FINISHES

AN ALCO INDUSTRIES COMPANY  
 BEARING PRODUCTS  
 ODESSA, TX. USA

SAFD 23052 K 09-07  
 ASSEMBLY DRAWING  
 SCALE 1 = 3  
 DRAWN PCF  
 DATE 1-7-13  
 CHECK: C-35249

ASSEMBLY NO.  
 DRAWING NO.  
 C-35249