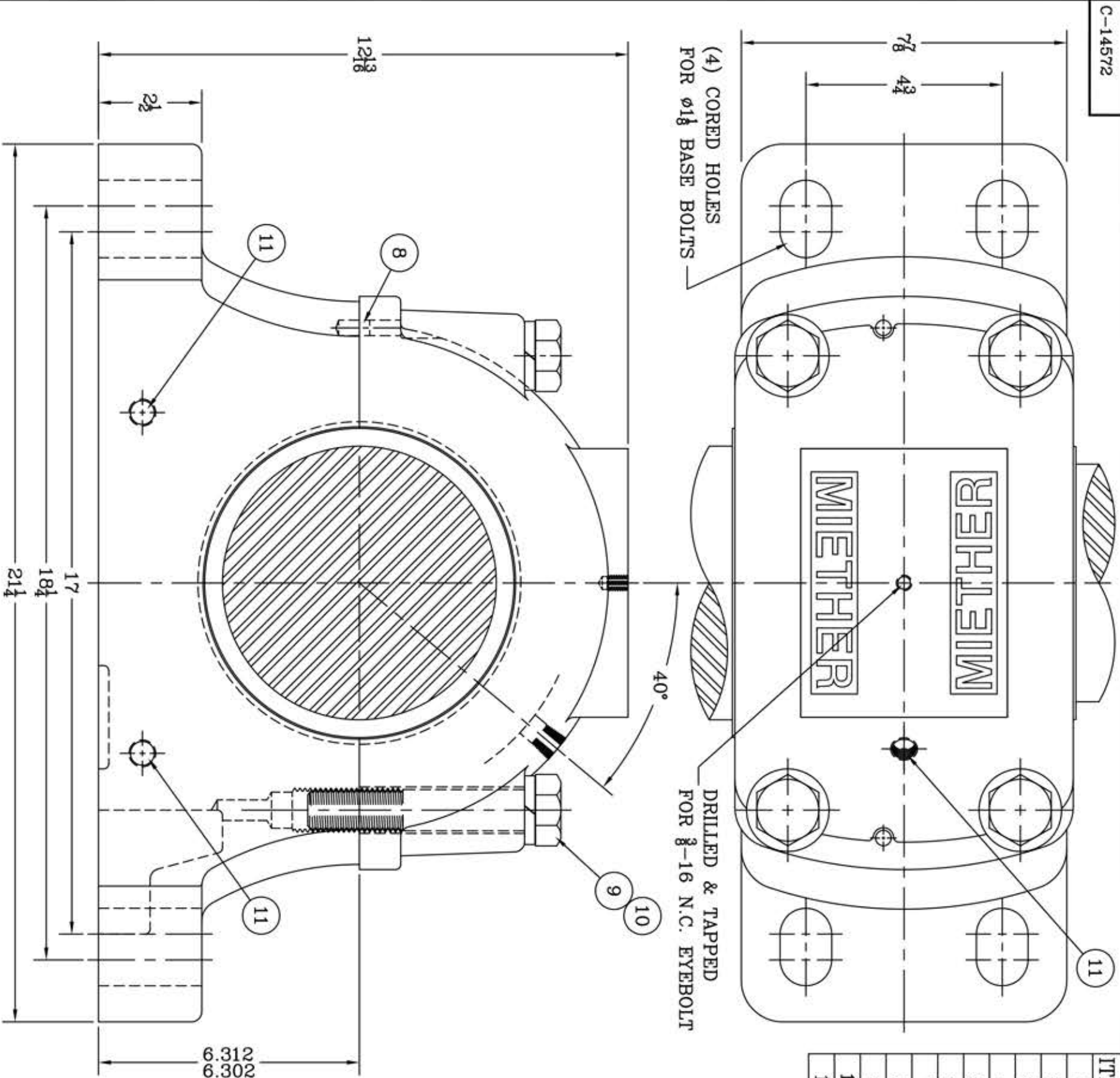
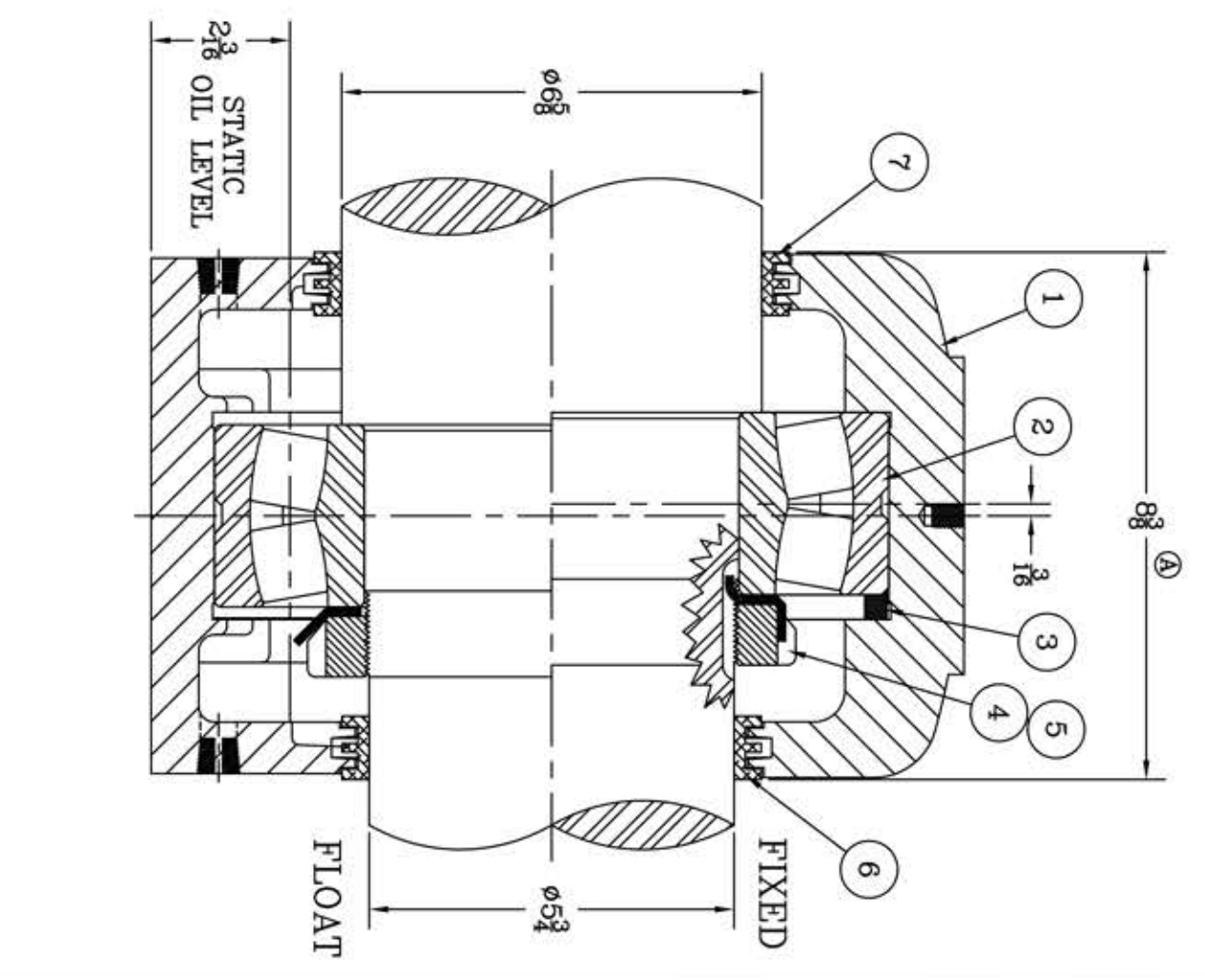


This drawing is the sole property of Miether Bearing Products and contains confidential and proprietary information. It is being provided to you for your use and may not be disclosed to any third party or used for any other purpose without Miether's prior written consent. The [materials] must be returned to the Company upon its demand. Your acceptance of these materials constitutes your acceptance of the foregoing terms.

C-14572



ITEM	DESCRIPTION	DETAIL	REQUIRED
1	HOUSING SDAF 230	C-15206	1 1
2	SPHERICAL ROLLER BEARING	22230/W-33	1 1
3	STABILIZING RING SR-30-0	A-10607	1 0
4	LOCKNUT AN-30	B-10419	1 1
5	LOCKWASHER W-30	00249	1 1
6	TRIPLE SEAL RING LER-134	A-10621	1 1
7	TRIPLE SEAL RING LER-151	A-10620	1 1
8	DOWEL	ø8 x 3/4 LONG	2 2
9	CAP BOLT HEX. HEAD	1-8 NC x 5 1/2 LONG	4 4
10	LOCKWASHER	1" SPLIT MED.	4 4
11	PIPE PLUG	3/8-18 NPT	5 5



WIDTH WAS 8 1/4  
RWB per KAB  
7-30-04  
REDRAWN FOR  
CONFORMITY  
RWB per KAB  
7-22-04

REVISIONS

SYMBOL	MICRO-INCH VALUE	DESCRIPTION
C	16	
D	32	
E	63	
F	125	
G	250	
J	500	
K	1000	

TOLERANCE: UNLESS OTHERWISE SPECIFIED  
FRACTIONS +- 1/32" ANGLES +- 0°-30'  
DECIMALS +- .005" WELD +- 1/16"  
CASTING +- 1/16"

A.I.S.I. STANDARD FINISHES

AN ALCO INDUSTRIES COMPANY  
BEARING PRODUCTS  
ODESSA, TX. USA

SDAF 22230	06-10 x 05-12
ASSEMBLY DRAWING	
SCALE HALF	ASSEMBLY NO.
DRAWN CJ	
DATE 1/3/72	DRAWING NO.
CHK:	C-14572