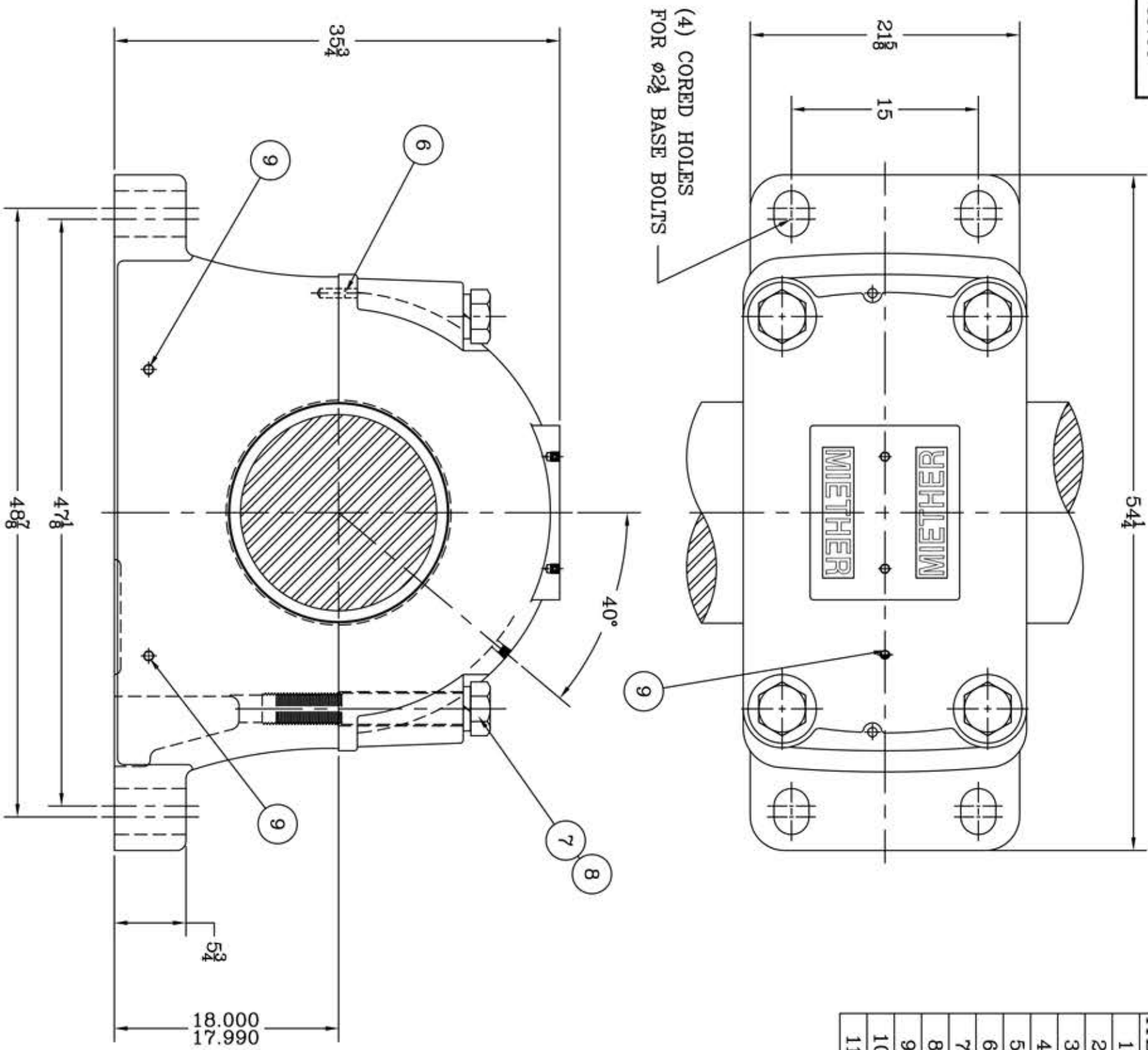
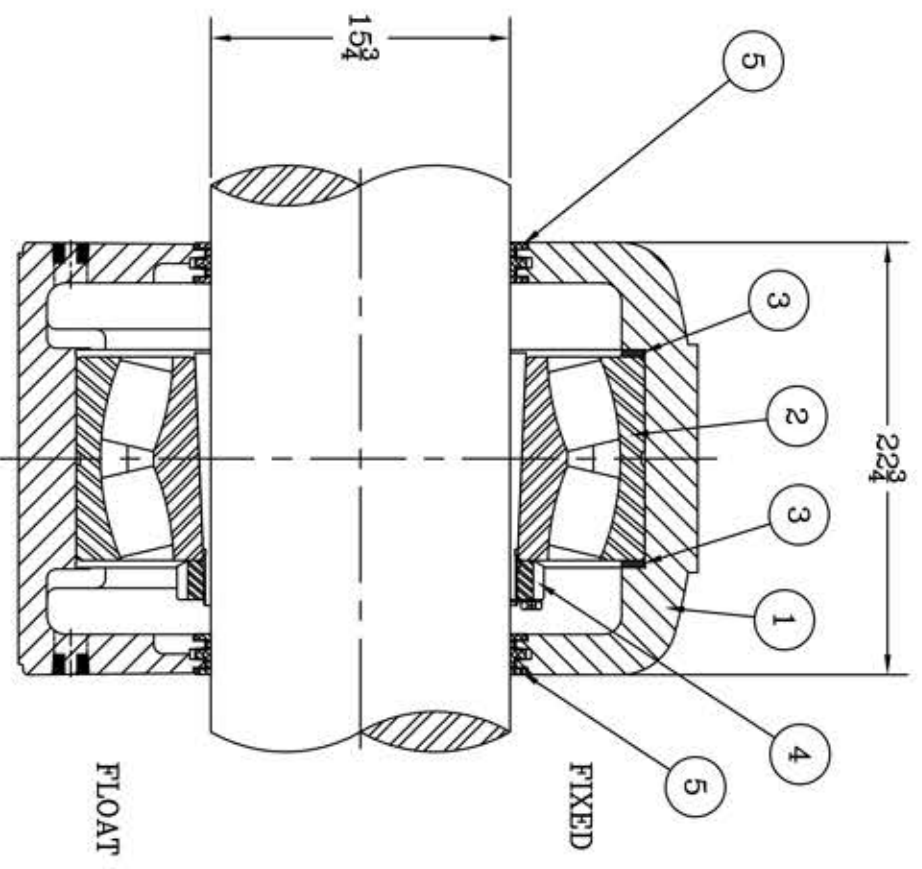


This drawing is the sole property of Miether Bearing Products and contains confidential and proprietary information. It is being provided to you for your use and may not be disclosed to any third party or used for any other purpose without Miether's prior written consent. The [materials] must be returned to the Company upon its demand. Your acceptance of these materials constitutes your acceptance of the foregoing terms.

C-33764



ITEM	DESCRIPTION	DETAIL	REQUIRED
1	HOUSING SDAF 3284 K 15-12	C-33325	1 1
2	SPHERICAL ROLLER BEARING	23284 K/W-33	1 1
3	STABILIZING RING A-8990	A-20426	2 0
4	ADAPTER SNP 3284 15-12	B-33326	1 1
5	TRIPLE SEAL RING ER-907	A-18258	2 2
6	DOWEL	Ø 3/4 x 2" LONG	2 2
7	CAP BOLT HEX. HEAD	2 1/2-4 NC x 15" LONG	4 4
8	LOCKWASHER	2 1/2 SPLIT MED.	4 4
9	PIPE PLUG	1/2-14 NPT	5 5
10			
11			



REVISIONS

SYMBOL	DESCRIPTION
C	
D	
E	
F	
G	
J	
K	

TOLERANCE: UNLESS OTHERWISE SPECIFIED  
 FRACTIONS ± 1/32" ANGLES ± 0° 30'  
 DECIMALS ± .005" WELD ± 1/16"  
 CASTING ± 1/16"

A.I.S.I. STANDARD FINISHES

MICRO-INCH VALUE	FINISH SYMBOL
16	C
32	D
63	E
125	F
250	G
500	J
1000	K

AN ALCO INDUSTRIES COMPANY  
 BEARING PRODUCTS  
 ODESSA, TX. USA

SDAF 23284 K 15-12  
 ASSEMBLY DRAWING

SCALE 1 = 7  
 DRAWN KAB  
 DATE 2/11/09  
 CHK:

ASSEMBLY NO.  
 DRAWING NO.  
 C-33764